

1:20,000 RECONNAISSANCE FISH AND FISH HABITAT INVENTORY  
NANIKA RIVER  
460-600600-64400-  
UPPER MORICE RIVER PLANNING AREA  
FISHERIES / PROJECT MAP  
NORTHWOOD PULP AND TIMBER  
MORICE FOREST DISTRICT  
1999  
MAPSHEET# 093L003 Map 6 of 15  
1000 0 1000 2000 Meters  
Scale 1:20,000  
Contour Interval (20m) Projection UTM  
Date: 2000/03/24 (yyyy/mm/dd)  
Company: EL of TRITON Environmental Consultants Ltd.

W  
N  
E  
S

STREAM INFORMATION SUMMARY

71306 ILP  
123-456789 Watershed Code

Stream (S)  
or  
Wetland (W)

Sample Site

Stream Reach Boundary

height  
(in meters)

length  
(in meters)

123-456789 Watershed Code  
12345ABCD Waterbody ID

Obstructions

Beaver Dam

Cascade

Falls

Culvert

Persistent Debris Accumulation

Dam

Features

Eroded Bank

Alluvial Fan

Colluvial Fan

Talus Cone

Rock Outcrop

Slumping Bank

Slump

Bedrock - confined

Landslide Debris

Landslide Area

Boulder Garden

Braided Stream

Rapids

Wetland / Marsh

Subsurface Flow

Tributary

De-watered Section

Side Channel

Enhancement / Management Activities

Fisheries Sensitive Zone

TRIM Base Map Anomalies

Field-Identified Stream

NVC

No Visible Channel

Base Map Features

River / Stream

River / Stream - intermittent

River / Stream - indefinite

Lake

Lake - intermittent

Lake - indefinite

Marsh

Swamp

Glacier

Icefield

Sand / Gravel Bar

Island

Road - In-use surface

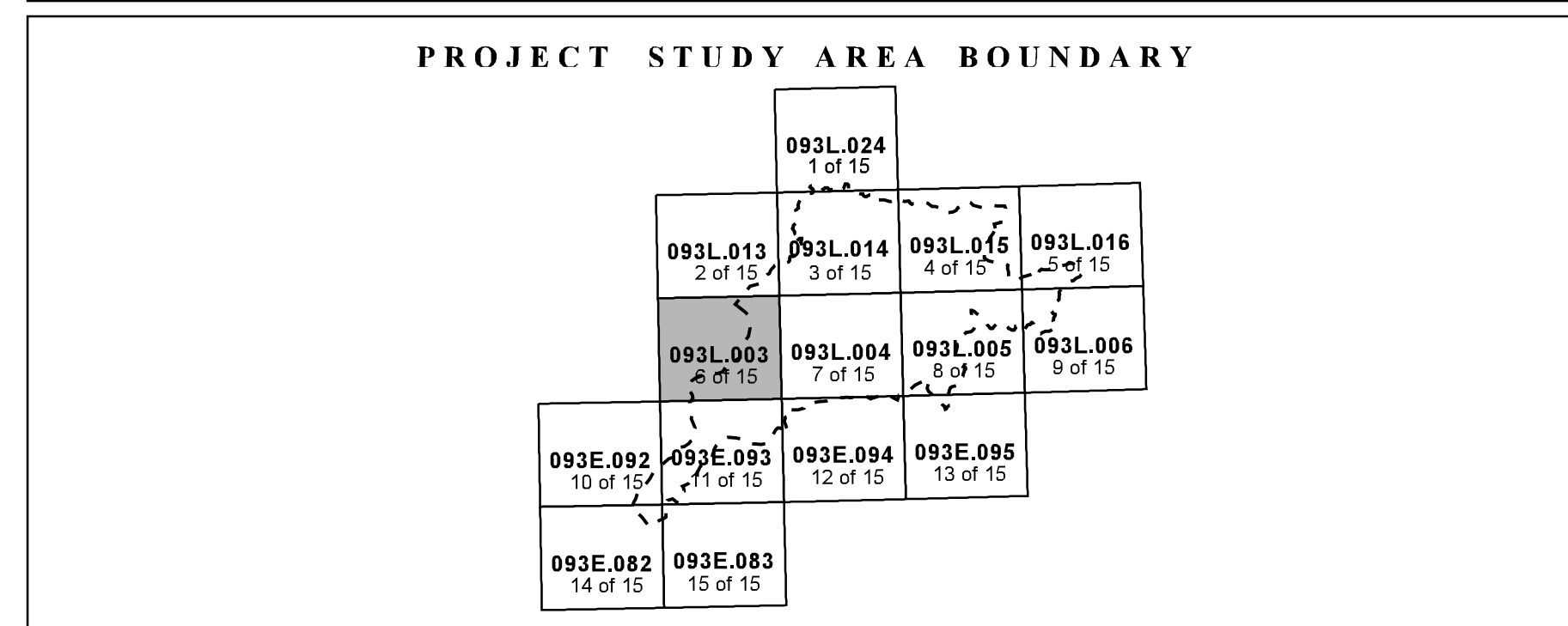
Road - rough surface

Index Contour (100m)

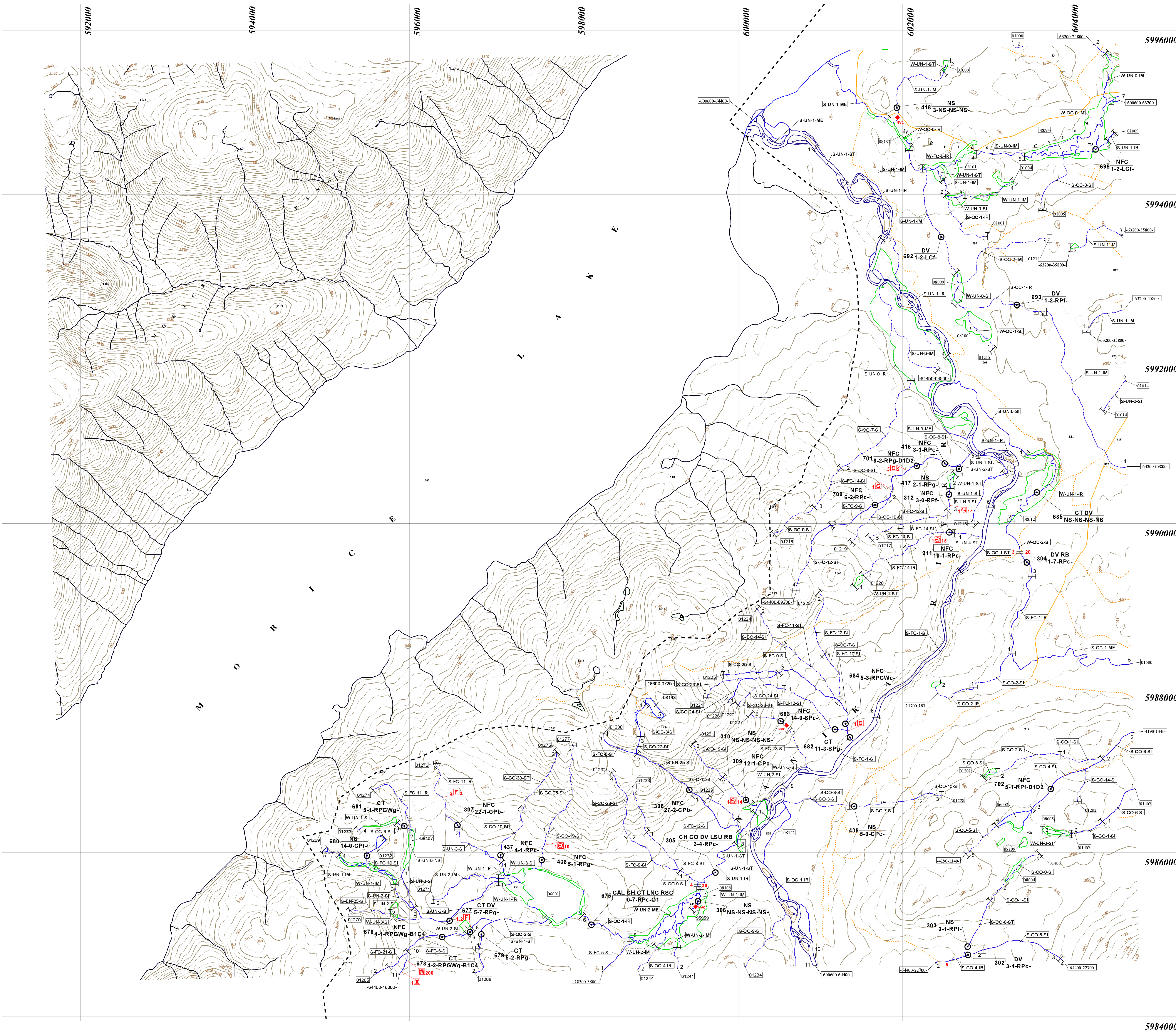
Index Contour - intermediate (20m)

Project Boundary

FISH SPECIES			
CODE	DESCRIPTION	CODE	DESCRIPTION
NFC	No Fish Caught	LNC	Longnose Dace
NS	Not Sampled	LSU	Longnose Sucker
BB	Bull Trout	LT	Lake Trout
BT	Bull Trout	LM	Lake Whitefish
CAE	Cougar Trout	MW	Mountain Whitefish
CAS	Cougar Trout	PCU	Pacific Cutthroat Trout
CTH	Chinook Salmon	PL	Pacific Lamprey
CO	Coho Salmon	RB	Rainbow Trout
CSU	Columbia River Salmon	RSC	Rainbow Smelt
CT	Cutthroat Trout	SK	Sockeye Salmon
DV	Dolly Varden	ST	Steelhead
L	Lamprey	SU	Sucker
LKC	Lake Chub	WSU	White Sucker



SOURCE INFORMATION			
BASE:	TRIM	STR SYM:	INV
LOC:	FDG	LK SYM:	N/A
HAB:	INV		
FISH:	INVD		
DATE INV:	1999/09/01	INV MGMT:	OTH



INVENTORY SOURCE INFORMATION CODES											
CODE	DESCRIPTION	CODE	DESCRIPTION	CODE	DESCRIPTION	CODE	DESCRIPTION	CODE	DESCRIPTION	CODE	DESCRIPTION
BASE	Base Map	LK SYM	Lake Symbol	APP	Aerial Photography	AP	Aerial Photography	INV MGMT	Group Properties for conducting inventory	INV MGMT	Group Properties for conducting inventory
TRIM	1:20,000 TRIM Maps	INV	Field Inventory	YDS	Video, Approximate	YDS	Video, Approximate	MEP	Ministry of Environment, Lands & Parks	MEP	Ministry of Environment, Lands & Parks
OTM	Other Map Source	SS	Summary	CNC	Video, Corrected	CNC	Video, Corrected	MOR	Ministry of Forests	MOR	Ministry of Forests
STR SYM	Stream Symbol	OTH	Other	OTH	Other	OTH	Other	OSC	Geological Survey of Canada	OSC	Geological Survey of Canada
INV	Field Inventory	LOC	Location Information	INV	Field Inventory	LOC	Location Information	OTH	Other	OTH	Other
SS	Summary	PDE	Field Estimate	SS	Summary	PDE	Field Estimate	DATE INV	Date of Inventory	DATE INV	Date of Inventory
N/A	Not Applicable	PDE	Field Estimate	N/A	Not Applicable	PDE	Field Estimate				
OTH	Other	APP	Aerial Photography	OTH	Other	APP	Aerial Photography				

STREAM SUMMARY SYMBOL INFORMATION											
CODE	DESCRIPTION	CODE	DESCRIPTION	CODE	DESCRIPTION	CODE	DESCRIPTION	CODE	DESCRIPTION	CODE	DESCRIPTION
AB	Abandoned Channel	TM	Terrestrial Mammals	c	cobble	B1	Abandoned Channel	L	Large Woody Debris	B1	Abandoned Channel
NS	Not Specified	IM	Irregular Meanders	b	boulder	B2	Stranding Banks	D1	Small Woody Debris	B2	Stranding Banks
REACH CHARACTERISTICS		ME	Regular Meanders	h	bedrock blocks, etc.	B3	Vegetation	D2	Large Woody Debris	B3	Vegetation
Confinement		WP	Regular Wind Patterns	M	Morphology	C1	Intensive riffles or cascades	D3	Recently formed LWD jams	C1	Intensive riffles or cascades
CO	Confined	SP	Shallow Pools	CP	Cascades	C2	Intensive riffles or cascades	S1	Intensive riffles or cascades	C2	Intensive riffles or cascades
PC	Equally Confined	UN	Unconfined	CP	Cascades	C3	Intensive riffles or cascades	S2	Intensive riffles or cascades	C3	Intensive riffles or cascades
OC	Occasionally Confined	NA	Not Applicable	CP	Cascades	C4	Intensive riffles or cascades	S3	Intensive riffles or cascades	C4	Intensive riffles or cascades
UN	Unconfined			CP	Cascades	C5	Intensive riffles or cascades	S4	Intensive riffles or cascades	C5	Intensive riffles or cascades
NA	Not Applicable			CP	Cascades			S5	Intensive riffles or cascades		

BASE MAP INFORMATION	
Projection:	UTM
Datum:	NAD83
UTM Zone:	9